

# FLOOR RANGE LLC

## SPC Straight Pattern Catalog Premium Flooring



## SPC Click STRAIGHT PATTERN

LIFE TIME WARRENTY,  
BEST FLOORING FOR  
COMMERCIAL AND  
RESIDENTIAL USE.



100% Water Proof



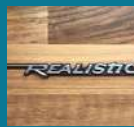
Anti Slippery



Non Allergic



Resistant to high heels



Realistic in feel



## SAND BROWN

---

Best Quality and most luxurious SPC Flooring is available. SAND BROWN/FP01 is the best indulgence for those who value style with timeless elegance.



### **PREMIUM PRODUCT**

SPC is perfectly suitable for homes with young kids or pets. The well-sealed wear layer of these tile tolerates wet mopping and cleaning





## ASH ARSENIC

---

Extreme durability and 100% Water proof means ASH ARSENIC/FP02 from premium quality flooring will stay looking for decades as the first day of its installation.

### **PREMIUM PRODUCT**

The Unclick locking mechanism of this SPC tile facilitates easy and hassle-free installation.





## **BROWNIE**

---

Taking inspiration from chocolate flavored of the same name. **Brownie/FP03** is a deep, dark and sensual floor that invoke memories of classic surroundings.

### **PREMIUM PRODUCT**

It is equally a smart choice when it comes to value for money and minimum maintenance and In a family home, hygiene is particularly important.

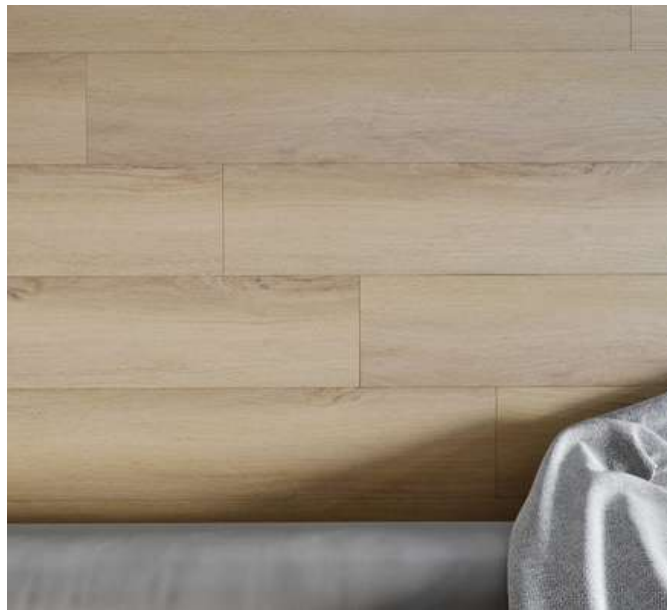




## INVISIBLE OAK

---

The unmistakable colour of INVISIBLE OAK/FP04, From the premium quality with its real-wood surface texture add knots and graining to the planks to add the interest of any room.



### PREMIUM PRODUCT

SPC flooring choice is perfect for high-traffic areas and wet conditions and offers an anti-slip, highly durable surface





## BISCUIT

---

With today's modern busy life styles a floor covering should be beautiful to look at, and last for years with little maintenance. **Biscuit/FP05** exceed those criteria



## PREMIUM PRODUCT

With Uni-Click, the planks simply click together, creating tight bonds – no glue or nails required. once your floor is installed, you can walk on it right away





## PROJECT WHITE

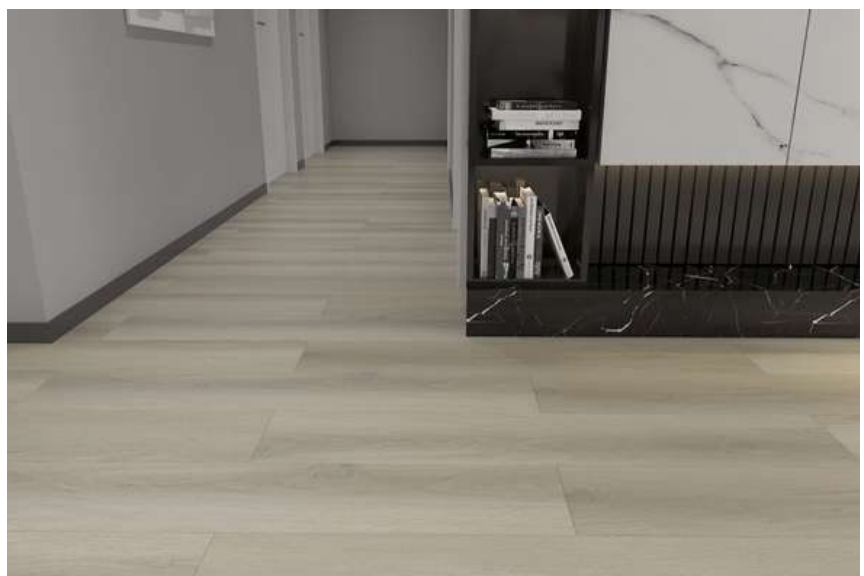
---

Project White/FP06 looks gorgeous best selection product by the flooring experts, reason is extremely low maintenance, Child proof and enhance any interior tones.



### PREMIUM PRODUCT

SPC Flooring is the perfect floor for a modern home which looks to make a true statement in design without having to concede high maintenance costs





## **VISIBLE SILVER**

---

Visible Silver/FP07 matching the upsurge in demand for the grey tones for home decoration.

### **PREMIUM PRODUCT**

SPC Flooring right from being great value for money, minimum maintenance, to great looking realistic wood grain effects, warm, beautiful and extremely hardwearing, with minimum maintenance.







## IVORY

---

IVORY/FP08, Use this eye-catching floor absolutely anywhere, from kitchens and bathrooms to sports halls and bustling hotel foyers.

### **PREMIUM PRODUCT**

once the SPC floor is in place, it will not expand and contract like solid wood floors or laminate. It's worthwhile installing an acoustic underlayer to absorb sound.





## AMERICAN WALNUT

---

American Walnut/FP09 featured, realistic walnut grains and knots for a modern wood look. Adding to this floor's appeal, it is fully waterproof and scratch resistant.



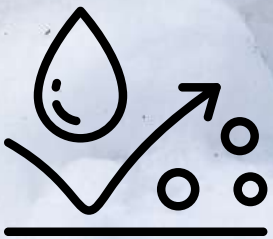
### PREMIUM PRODUCT

SPC Floor offers exceptional value for your money. Stylish, hardwearing and convenient to install



# Technical Data sheet

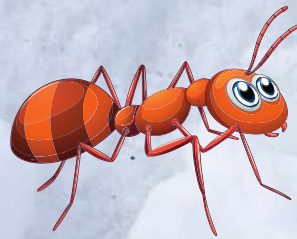
<b>Description:</b>	SPC FLOORING (100% virgin material)
<b>Physical Properties</b>	
Construction:	5.0mm SPC core (Limestone + Virgin PVC composite, not contain plasticizer)
Underlayment:	Plus 1mm embossed IXPE
Density:	2050 kgs/m <sup>3</sup>
Plank size:	Length 1220mm x Width 180mm x Thickness x 7mm
Wear-layer:	0.3mm (12mil)
Finish:	Deep embossed texture
Gloss Level	6%-7%
Profile:	2G angel interlocking system
Edge:	Mini-micro-beveled edge
Packaging	2.6352m <sup>2</sup> / carton, 12 planks per carton, 22.15kgs/carton



Water Proof



Anti Slippery



Insects Proof



Heel Resistant



Warm Under  
Feet



Realistic  
appearance



ECO Friendly



Affordable