

FLOOR RANGE LLC

HERRINGBONE CATALOG



SPC Click HERRINGBONE

20 YEARS WARRANTY
BEST FLOORING FOR
COMMERCIAL AND
RESIDENTIAL USE.



100% Water Proof



Anti Slippery



Non Allergic



Resistant to high heels



Realistic in feel



DARK BROWN OAK

The DARK BROWN OAK creates an inviting atmosphere thanks to its stylish wood structure and it makes a classic interior like this one even more charming.

PREMIUM PRODUCT

SPC also has a warm feel and it's perfectly suited for under floor heating.





LIGHT GREY OAK

The LIGHT GREY OAK is a real eye-catcher with its interplaying lines.

A subtle gloss in the right places highlights the softly weathered wood structure even more.

PREMIUM PRODUCT

Accidents can happen. SPC fortunately has a sealed surface which means dirt cannot penetrate into the floor and you are able to clean the floor with water.





NATURAL OAK

These NATURAL OAK planks will give your home the authentic look of European Eucalyptus. The classic European designs are ideal for care free and casual living, with all the benefits of SPC.

PREMIUM PRODUCT

The strong and durable surface layer makes SPC floors ideal for spaces which are used intensively.





GREY RECLAIMED OAK

The GREY RECLAIMED Oak have saw cuts and cracks to create a distinctive look. The light, matt patina effect softens the floor's appearance.

PREMIUM PRODUCT

The waterproof SPC floors are suitable for bathrooms, laundries, kitchens and every other room in the home.





MIST GREY ASH

The aesthetics and timeless elegance of MIST GREY ASH herringbone floor is unique and this is why it forms a key design element in heritage, period and contemporary architecture.

PREMIUM PRODUCT

The strong and durable surface layer makes SPC floors ideal for spaces which are used intensively.





SOFT RECLAIMED OAK

The typical wood grain structure and glossy coating give the soft and cool colour scheme of the SOFT RECLAIMED OAK floor even more style.

PREMIUM PRODUCT

SPC is made of high-quality synthetic material which means the floor is waterproof..





WASHED GREY OAK

WASHED GREY OAK adds a whole new dimension to the floor and room.

Combining the stunning looks with the textured details adds an extra sensory dimension to the experience.

PREMIUM PRODUCT

FLOOR RANGE SPC floors are very easy to clean thanks to the sealed, hygienic surface layer. They are completely waterproof so you can clean them with a wet cloth.



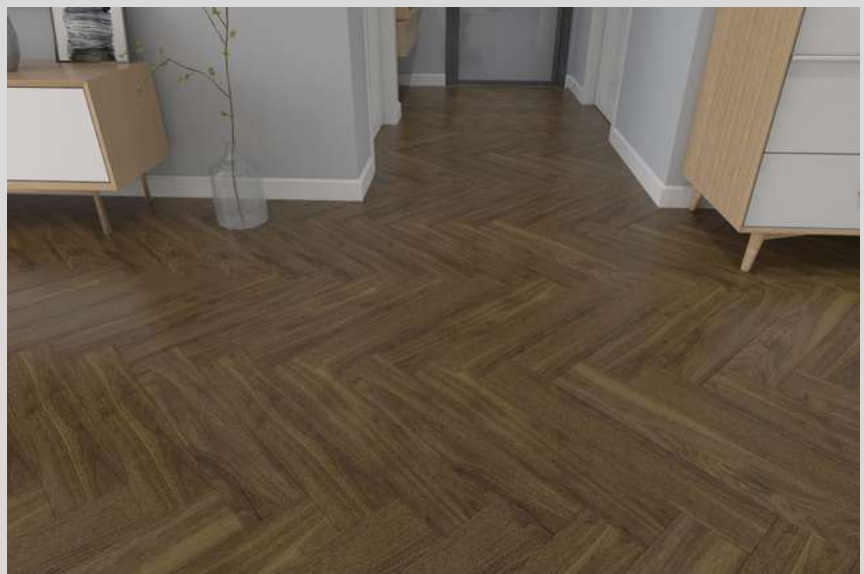


COFFEE WALNUT

The delicate lines of COFFEE WALNUT a relaxed atmosphere in your home. The elegant grooves have the same colour as the floor strips, which softens the floor's character.

PREMIUM PRODUCT

SPC is made of high-quality synthetic material which means the floor is waterproof..





MIST DESERT OAK

Admire and feel the natural elements in the earthy colors of MIST DESERT OAK. The attractively balanced wood lines have a tactile surface structure to give the floor more depth.

PREMIUM PRODUCT

Footprints are wiped away easily on SPC floors, which are easy to clean.





EUROPEAN CLASSIC OAK

SPC floors by FLOOR RANGE offer a solid foundation for a playful, contemporary mix of designs.

EUROPEAN CLASSIC OAK durable surface layer ensures a long life while your interior continues to evolve.

PREMIUM PRODUCT

A SPC floor can cover your entire interior. It is both soft and warm in your living room, as well as a water resistant and clean solution for your bathroom.



Technical Data Sheet

TECHNICAL DATA

Description:	SPC FLOORING - Herringbone collection
Physical Properties	(Rigid Stone-PVC-Composite vinyl plank)
Construction:	4.0mm SPC core (Limestone + Virgin PVC composite, not contain plasticizer)
	2100 kgs/m3 density
Plank size:	625x125x4.0mm
Wear-layer:	0.3mm (12mil)
Finish:	Deep embossed texture
Gloss Level	6%-7%
Profile:	Valinge 2G click locking system, with right hand plank + left hand plank
Edge:	Micro-bevel
Packaging:	Half right hand plank (A) + half left hand plank (B) packed in one box. 1.875m ² / carton, 24 planks per carton, 66ctns/pallet, 15.75kgs/carton

Detailed Technical Data:

Properties	Test Method	Unit	Test Result	Remarks	
Dimensional stability (Expansion or shrinking)	BS EN ISO 23999:2012	%	Manufacturing direction	0.06	Heating temperature: 80? Heating time: 6h
			Across-manufacturing direction	0.04	
Curling after exposure to heat		mm	0		
Peel Resistance (top layer)	BS EN ISO 24345:2012	N/50mm	Machine direction	95N/50mm	Loading rate: 100mm/min
			Across machine	90N/50mm	
Residual indentation	EN ISO 24343-1:2012	mm	0.03		Pass
Staining and resistance to chemical	EN ISO 26987:2012	/	Not affected		Pass
Wear resistance (0.3mm/12mil)	EN 660-2:1999 +A1:2003 and EN649:2011	/	Wear group: T		Pass
Color fastness to light	EN ISO 105-B02:2014	/	Grade (Bluewood Std) 6		Meets requirement
Effect of a castor chair	EN 425:2002	/	No visible damage		Pass
Slip resistance	DIN 51130:2014-02	/	Critical angle of inclination: 12.0 °	R11	Pass
RoHS Directive 2011/65/EU	IEC 62321		Not Detected		Pass
Phthalates test (DBP, BBP, DEHP, DINP, DNOP, DIDP, DnHP)	EN14372:2004		Not Detected		Meets requirement
REACH	Regulation (EC) No 1907/2016 REACH	%	According to the specified scope and evaluation screening, the test results of SVHC are less than 0.1%(w/w)		169 Substances of Very High Concern (SVHC) for authorization by European Chemicals were Not Detected.
Fire-resistant rate = Bfl-S1	EN ISO 9239-1	/	Critical flux (kW/m ²)	≥11	Result: Bfl-S1
			Smoke (%xminutes)	160	
	EN ISO 11925-2 Exposure = 15s	/	Fs ≤ 150 mm	YES	
VOC (Floorscore)	CDPH/EHLB/Standard Method V1.2	/	35 types of chemicals		Pass